



CSi SAP2000

Software Instructions V1

Created by	James T	Date	18/09/20
Reviewed by		Date	

Software Instructions: CSI SAP2000

Acknowledgments

We would like to acknowledge the following references used to compile these instructions for students:

- Official CSI America SAP2000 instructions:
<https://www.csiamerica.com/products/sap2000/watch-and-learn>

Contents

- 1.0 Introduction3
- 2.0 Select Commands**Error! Bookmark not defined.**
- 3.0 Draw Commands**Error! Bookmark not defined.**
- 4.0 Mass and Modal Analysis**Error! Bookmark not defined.**
- 5.0 Further Functionality**Error! Bookmark not defined.**

COMMONWEALTH OF AUSTRALIA

Copyright Regulations 1969

WARNING

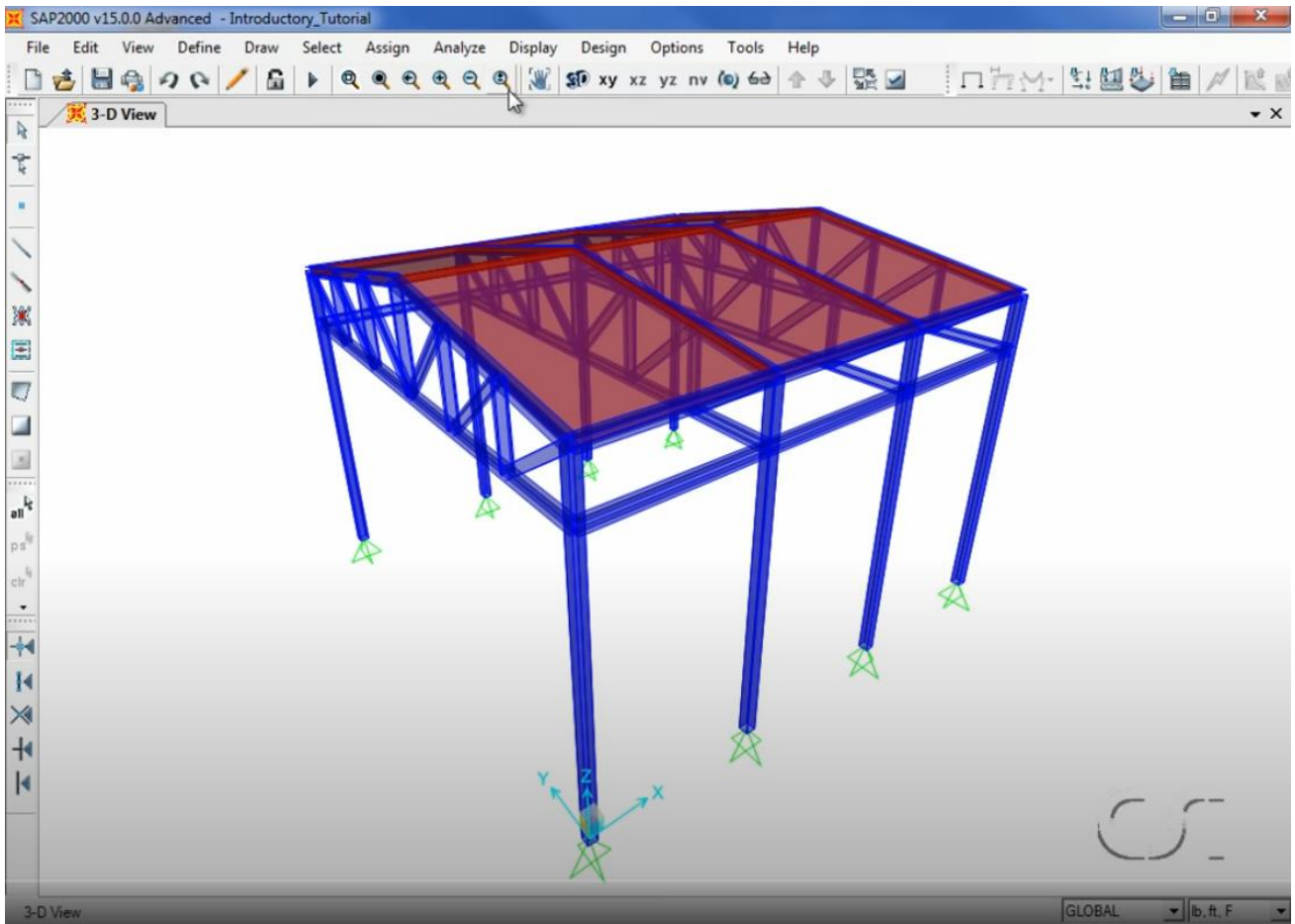
This material has been reproduced and communicated to you by or on behalf of The Engineering Institute of Technology pursuant to Part VB of the *Copyright Act 1968* (the Act).

The material in this communication may be subject to copyright under the Act. Any further reproduction or communication of this material by you may be the subject of copyright protection under the Act.

Do not remove this notice.

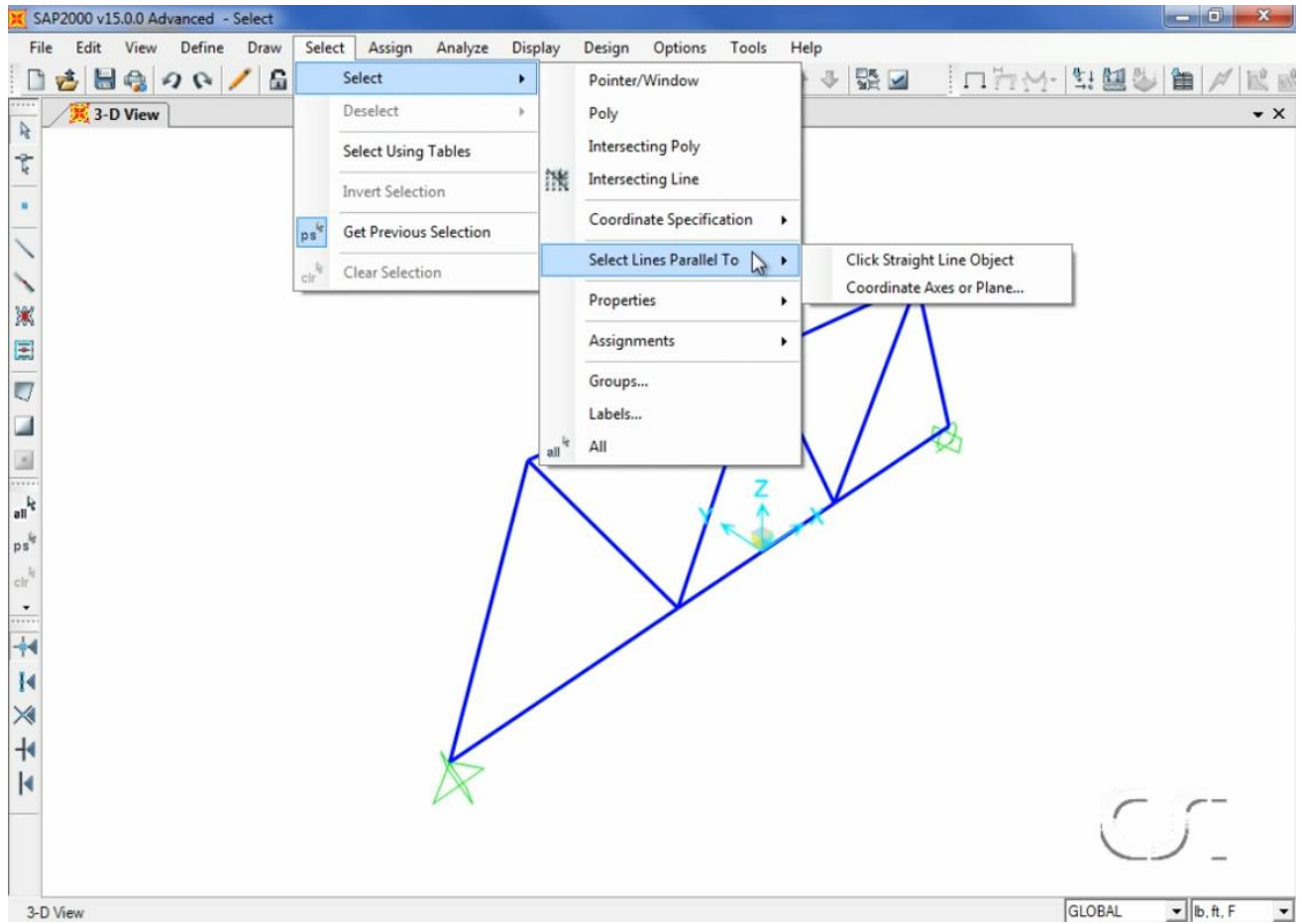
1.0 Introduction

Watch: <https://www.youtube.com/watch?v=2povDdw2pTQ>



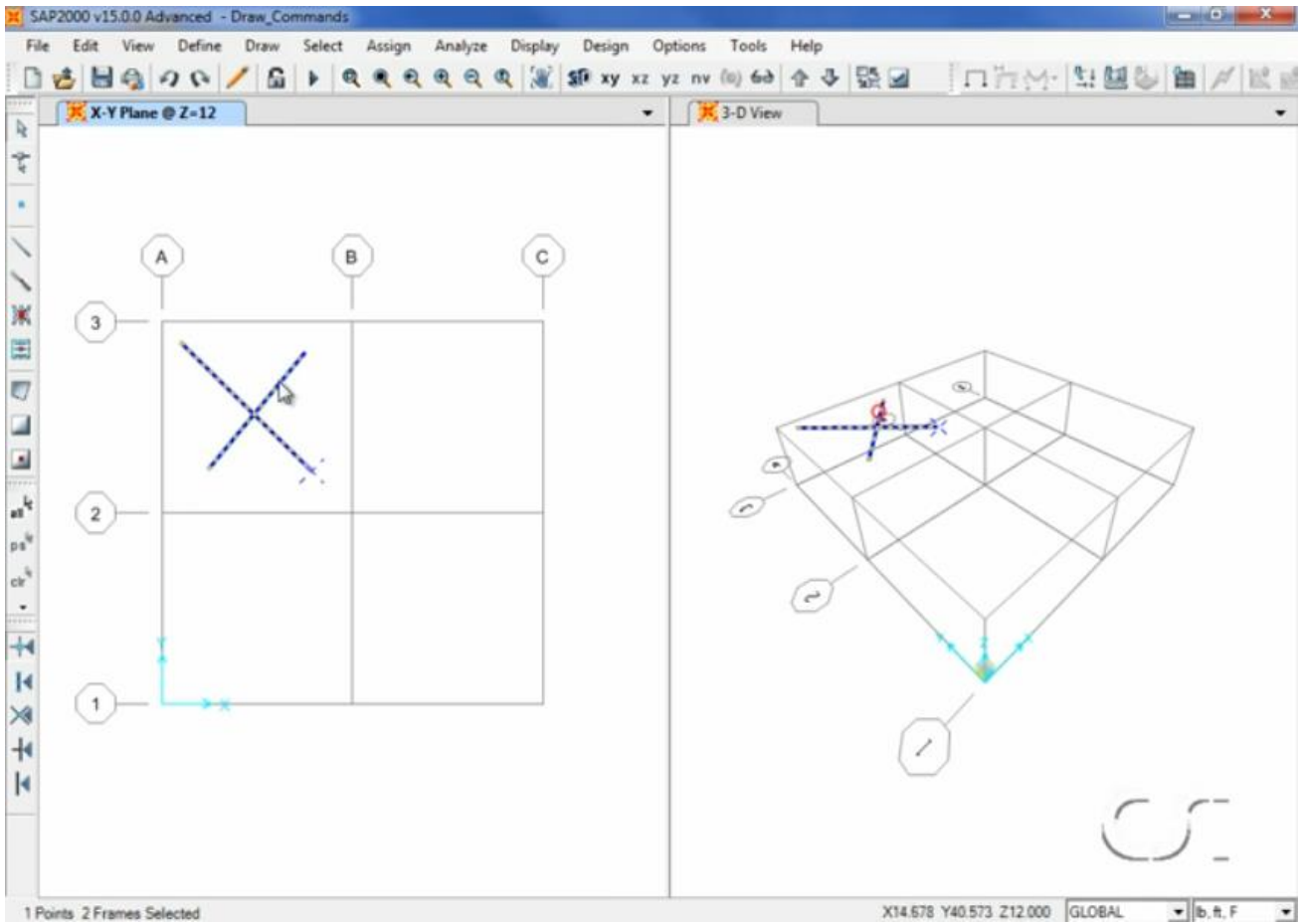
2.0 Select Commands

Watch: <https://www.youtube.com/watch?v=Ck1-a4asRhA>



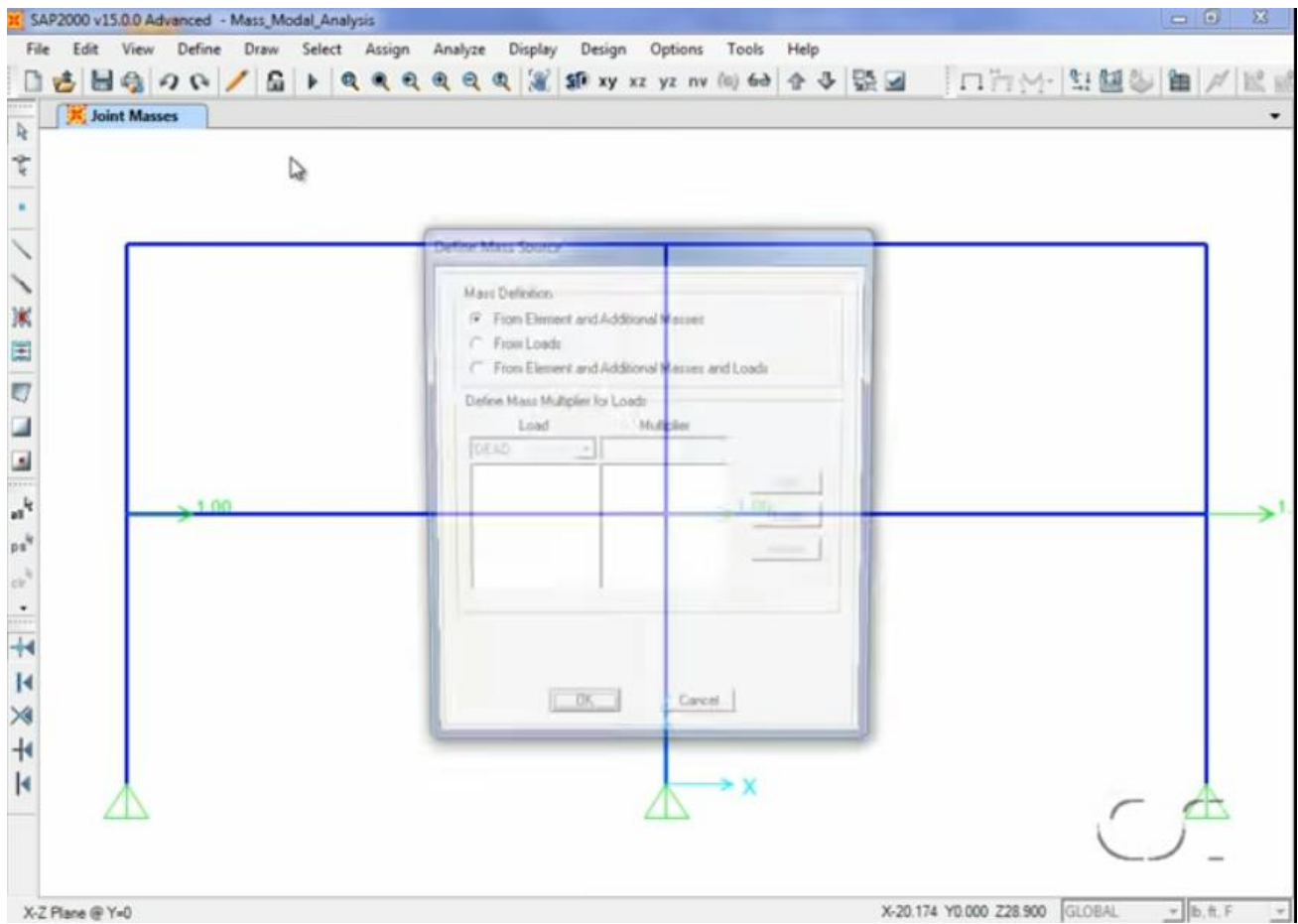
3.0 Draw Commands

Watch: <https://www.youtube.com/watch?v=aLCMgOP6pmw>



4.0 Mass and Modal Analysis

Watch: <https://www.youtube.com/watch?v=3ZbKg-oVC5I>



5.0 Further Functionality

Please view the other official CSi SAP2000 Watch and Learn tutorials as required:

<https://www.csiamerica.com/products/sap2000/watch-and-learn>

01 Introductory Tutorial (30:17)	 YouTube	 MP4	 WMV
02 Select Commands (6:49)	 YouTube	 MP4	 WMV
03 Draw Commands (9:29)	 YouTube	 MP4	 WMV
04 Mass and Modal Analysis (5:46)	 YouTube	 MP4	 WMV
05 P-Delta Analysis (10:17)	 YouTube	 MP4	 WMV
06 Nonprismatic Sections (6:22)	 YouTube	 MP4	 WMV
07 Interactive Database Editing (7:59)	 YouTube	 MP4	 WMV
08 Area Edge Constraints (3:13)	 YouTube	 MP4	 WMV
09 Tension-only Bracing (4:21)	 YouTube	 MP4	 WMV
10 Response Spectrum Analysis (5:31)	 YouTube	 MP4	 WMV
11 Modal Time History Analysis (14:04)	 YouTube	 MP4	 WMV
12 Section Designer (13:23)	 YouTube	 MP4	 WMV
13 Cardinal Points (9:51)	 YouTube	 MP4	 WMV
14 Displaying Tabular Data (9:14)	 YouTube	 MP4	 WMV
15 Creating Reports (11:18)	 YouTube	 MP4	 WMV
16 Cable Objects (18:40)	 YouTube	 MP4	 WMV
17 Tendons (10:33)	 YouTube	 MP4	 WMV
18 Gap Elements (17:46)	 YouTube	 MP4	 WMV
19 Nonlinear Staged Construction (7:48)	 YouTube	 MP4	 WMV
20 Nonlinear Shear Walls (29:49)	 YouTube	 MP4	 WMV
21 Static Pushover Analysis (10:40)	 YouTube	 MP4	 WMV
22 Power Spectral Density (12:50)	 YouTube	 MP4	 WMV
23 Wave Loading (5:24)	 YouTube	 MP4	 WMV
24 Model Alive (4:52)	 YouTube	 MP4	 WMV
25 Open Application Programming Interface (13:54)	 YouTube	 MP4	 WMV
26 CSiLoadOptimizer (10:36)	 YouTube	 MP4	 WMV
27 Buckling Factors and Modes (7:22)	 YouTube	 MP4	 WMV
28 Varying Mass in Seismic Analyses (17:13)	 YouTube	 MP4	 WMV
29 Fast Nonlinear Analysis (17:58)	 YouTube	 MP4	 WMV
30 Web Activated Licensing (13:59)	 YouTube	 MP4	 WMV
31 Automated Wind Loads (18:43)	 YouTube	 MP4	 WMV
32 Steady-State Vibration (17:36)	 YouTube	 MP4	 WMV
33 Modeling Beam-Column Joint Flexibility (12:05)	 YouTube	 MP4	 WMV
34 Concrete Shell Reinforcement Design (16:56)	 YouTube	 MP4	 WMV