



Advanced Diploma of Industrial Automation (DIA)

Module 3: Control Valve Sizing, Selection and Maintenance
Remote Lab Instructions: Mitech CVSize

Version 3

| | | | |
|--------------|-------------|-------|--------|
| Created By: | Nagendra G | Date: | 2/5/14 |
| Reviewed By: | Steve Steyn | Date: | 2/7/14 |

DIA MODULE 3 SOFTWARE INSTRUCTIONS

Mitech CVSize

Preliminary instructions

Remote Labs

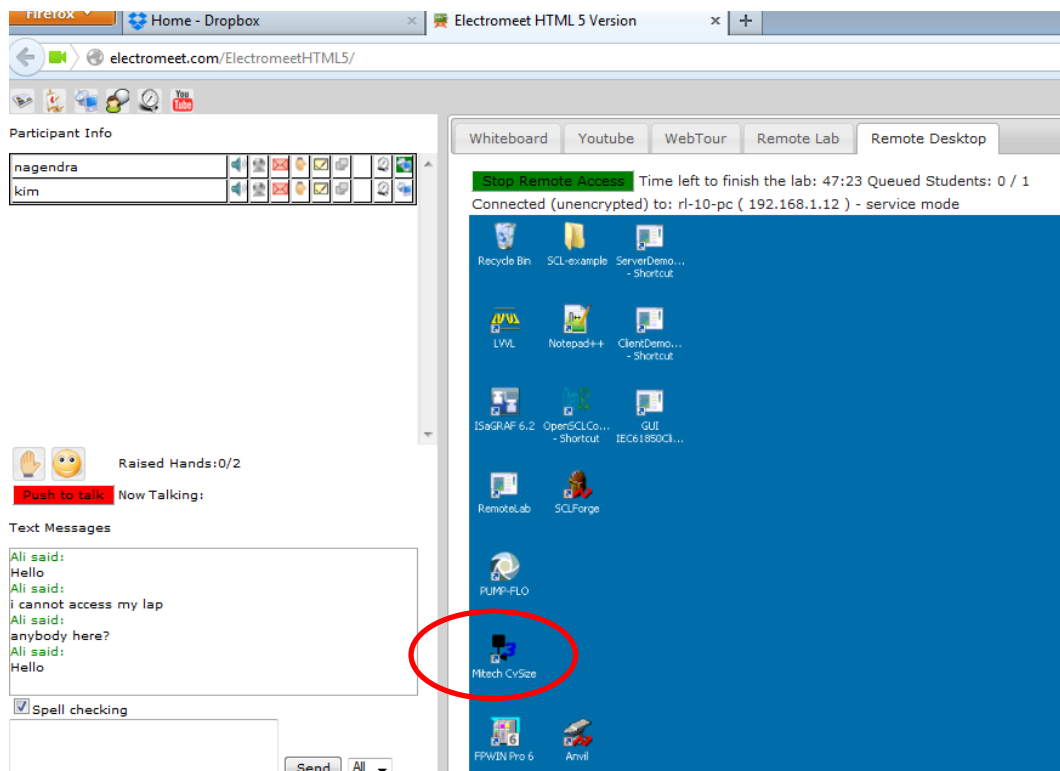
<https://www.youtube.com/watch?v=U9zyrwrAmNo&list=UULo67YCh8z836Mgl8-3-Zfw>
CVSize

<https://www.youtube.com/watch?v=oLtCk0-6ePk>

If you install the Mitech CVSize software on your computer, you can skip this step and continue with Exercise Setup.

If you are using Electromet Remote Lab, follow the instructions below:

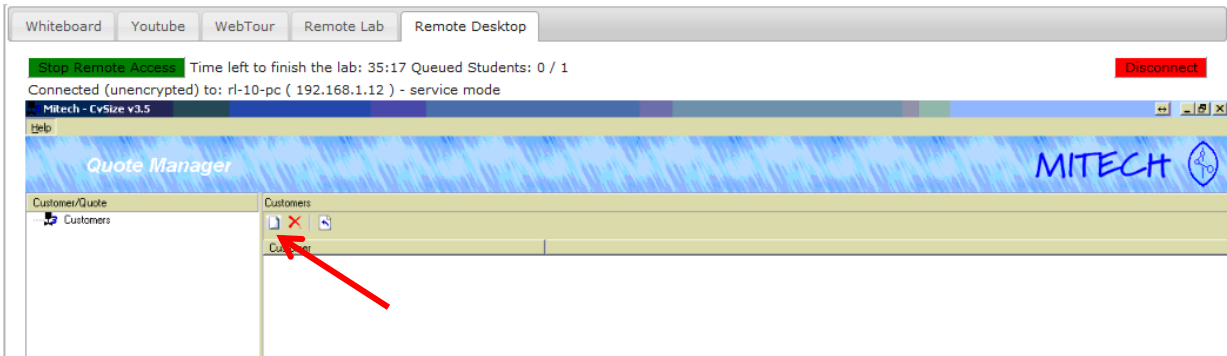
1. Logon to Electromet (follow instructions on How to Connect to Electromet Remote Labs)
 - **Open Remote Lab 8.** Mitech CVSize is installed on Remote Lab 8.
2. Open Mitech CVSize
 - The icon is located on the desktop



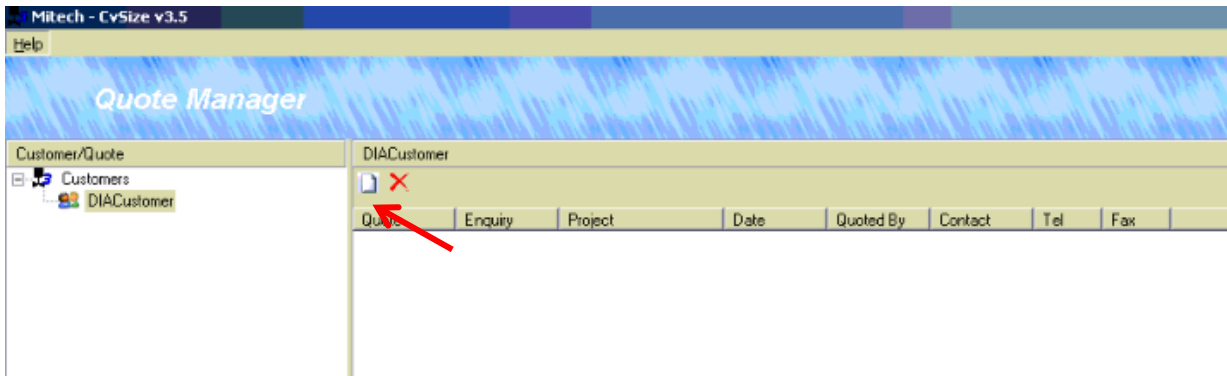
3. This software allows one to select the control valve size based on the required specifications and to prepare a quote for a customer. But in this exercise, you will use this software to select the correct valve size based on the given specifications.

EXERCISE SETUP

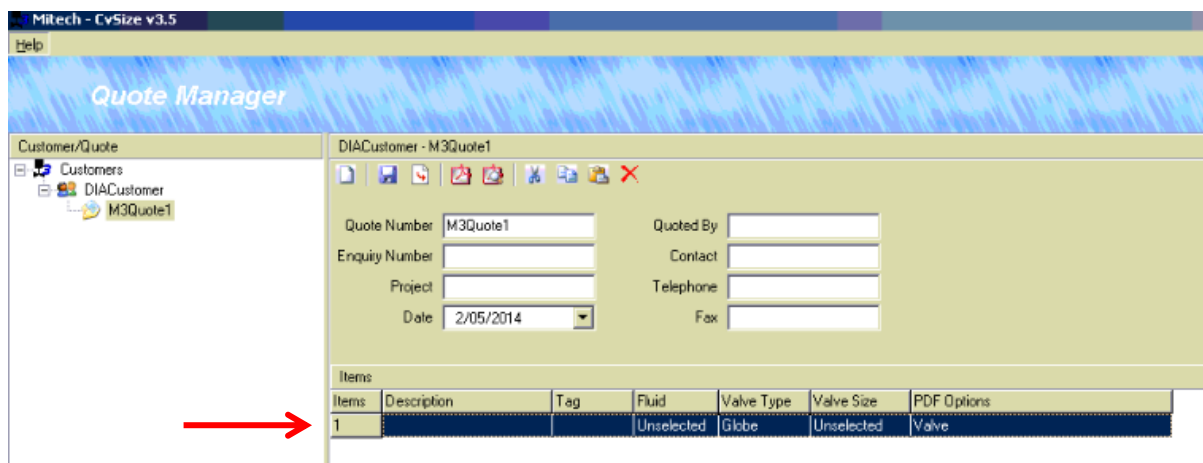
- When you open the software, if the screen is similar to what is shown below, you need to create a fictitious customer. But if it already has a customer name, you can skip this step. Click on New Customers icon to create a customer name. You can give any name for the customer.
 - E.g. DIACustomer



- Click on New Quote icon. Give a name for the quote e.g. M3quote1



- Double click on Item button to enter the specifications.



- For each customer, you can create several items to enter the required specifications. Follow the instructions from your assignment to complete the exercise.
- Once you complete the exercise you can delete the customer name so that the other students can follow the same instructions.

