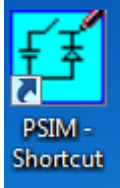


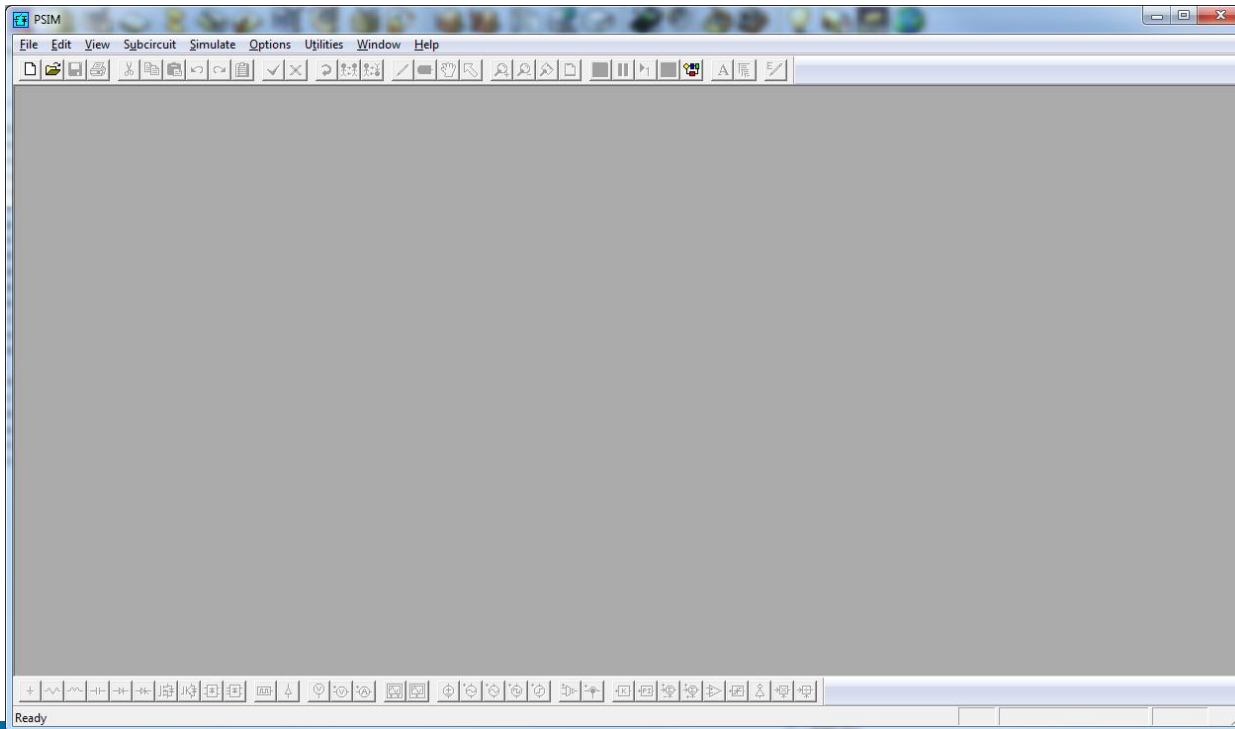
Using PSIM for remote LABS

PSIM

- PSIM is a simulation software specifically designed for power electronics and motor drives.
- A demo version (9.0 or 9.1) of PSIM is used for the remote labs. You can use the version on the EIT Remote Lab 1, 4, 5, 6, 9, DNP3, Profibus
- Or download a copy from www.powersimtech.com
- All the exercises have been tested to run on the demo version of PSIM

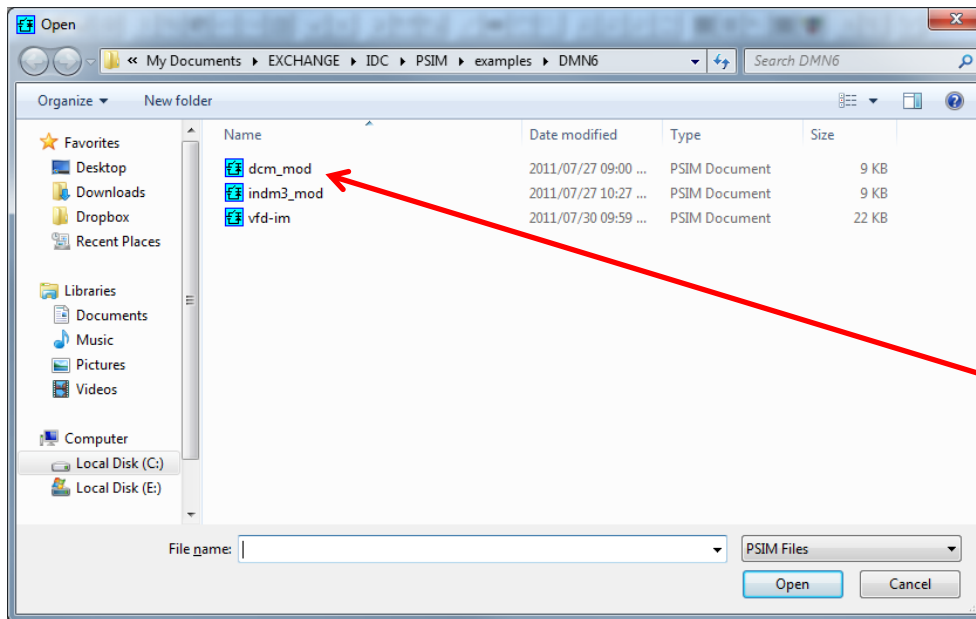
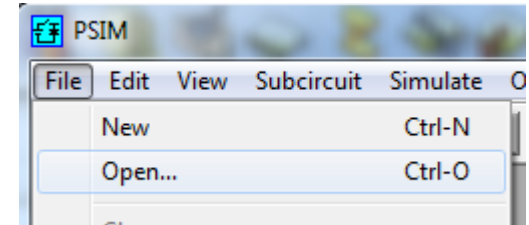
Using PSIM

- Select the PSIM icon  from the Remote Lab computer.
- The PSIM application will start



Selecting a Remote Lab Example

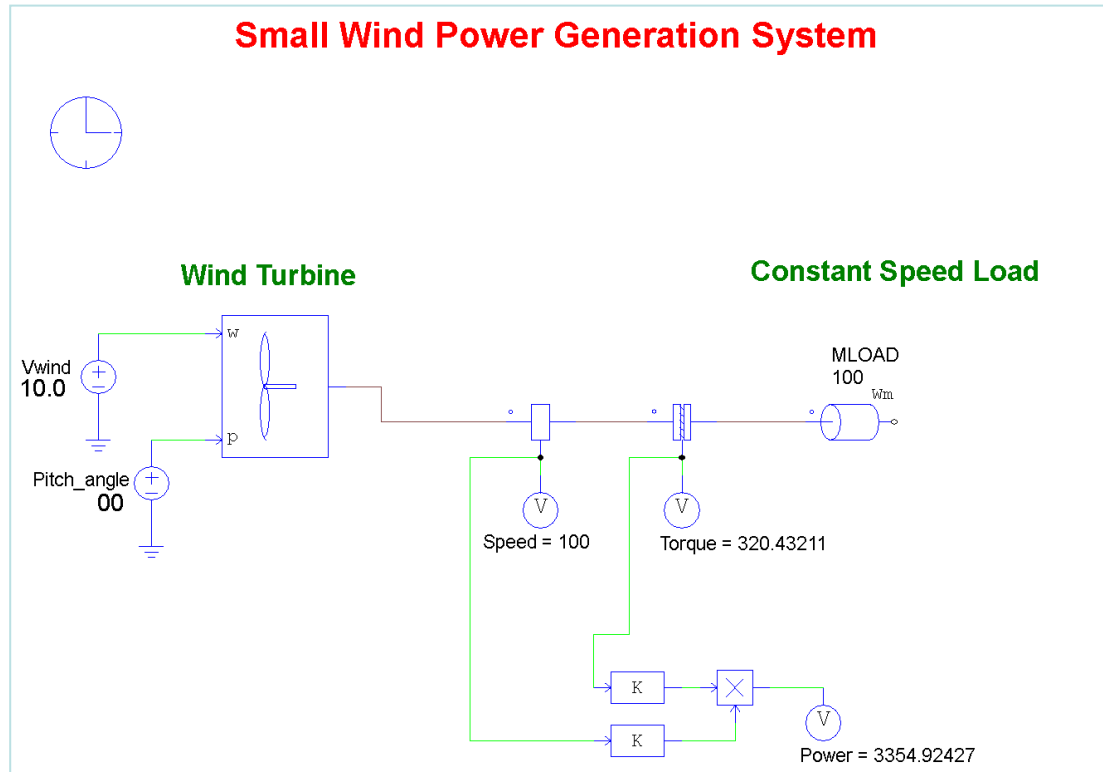
- Select File -> Open from the menu to display the lab files




- Select the required file e.g. dcm.mod.

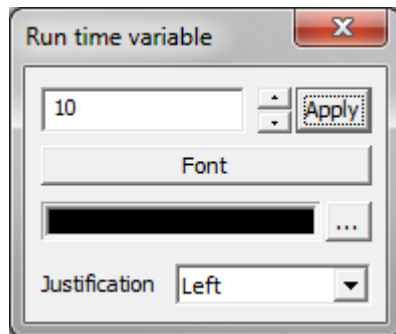
PSIM Schematic

- The selected file will open and a block diagram will be displayed (E.g. below):


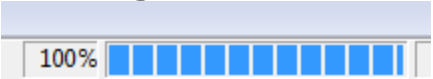


Changing Model Elements

- The lab may require you to change the parameters in the model elements.
- This can be done by selecting and double clicking the required element. E.g. value of Wind Speed V_{wind} : 
- A window will display the parameters. Make the changes and close the window.



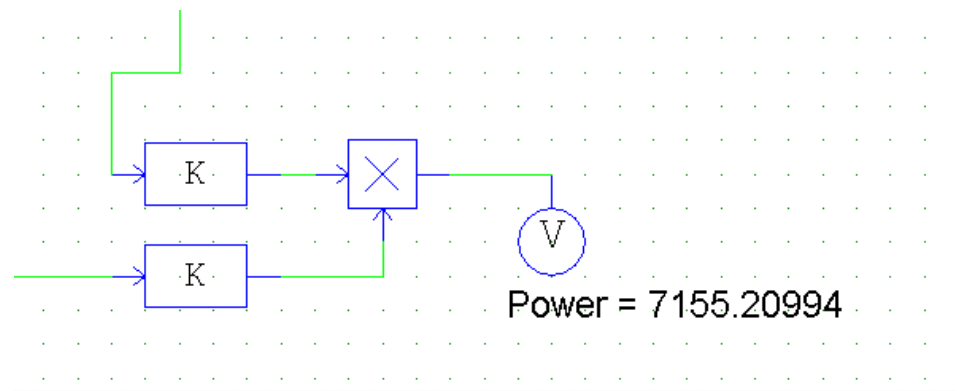
Running a Simulation

- Once you are ready to simulate the circuit select Simulate -> Run Simulation from the menu. Function key F8 or the Icon 
- During the simulation a progress indicator will be shown at the bottom. 

Once it is at 100% the simulation is complete and the results can be displayed in Simview. When “Free Run” is selected in the Simulation Control, the simulation values will be displayed next to the relevant parameter.

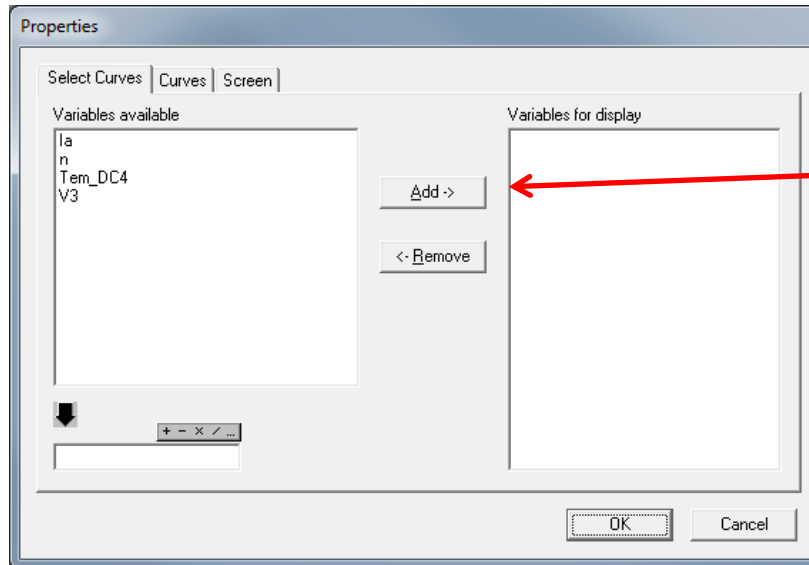
Free Run Simulation

- During a “Free Run” simulation the parameter values are displayed in real-time.
- Changes to adjustable variables can be made during the simulation.



Selecting Variables to Plot

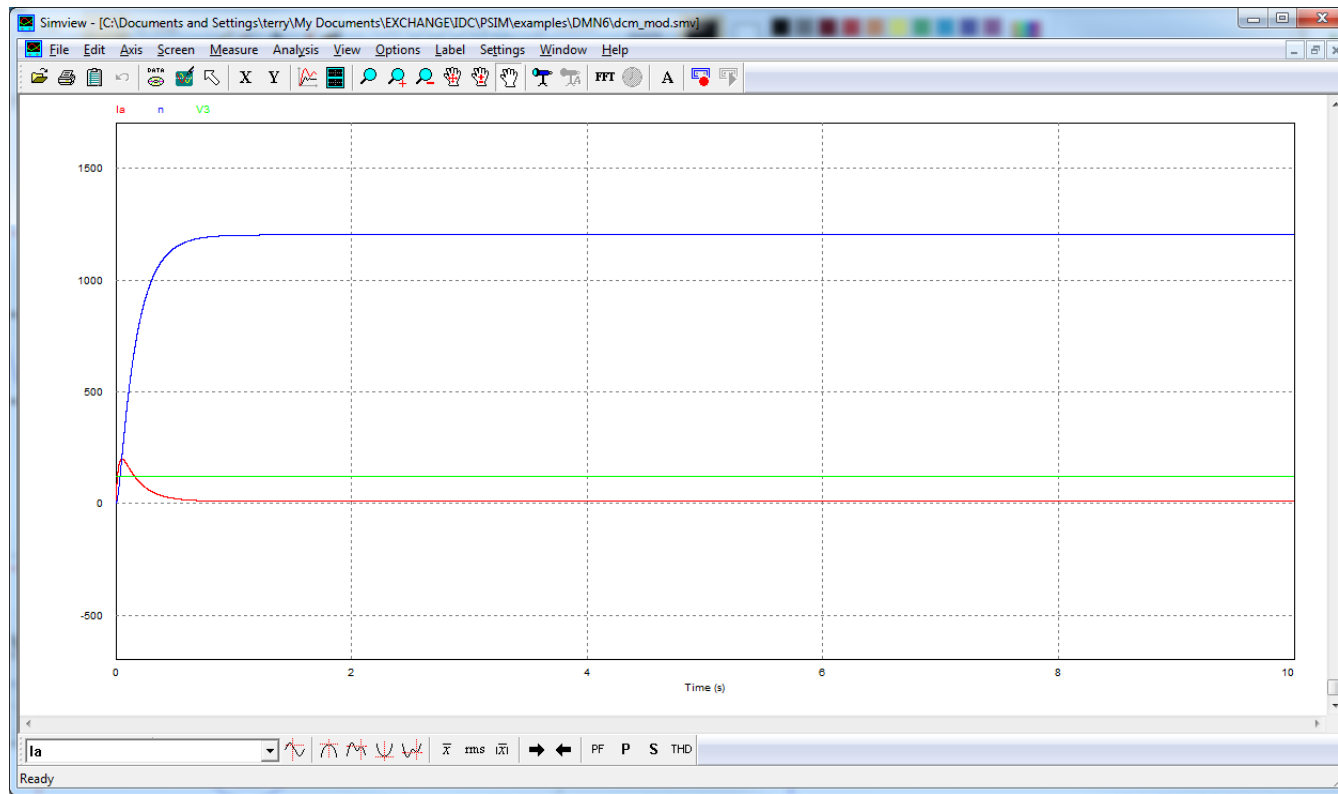
- Once the simulation is complete you can select the variables to display in Simview . A selection screen will be displayed



Highlight the selected variables and Add them to the Variables for display window

Simulation Results

- The results are displayed for the selected variables.



Additional Info

- For more detailed information consult the PSIM user manual - PSIM User Manual.pdf