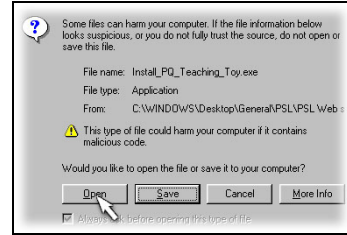
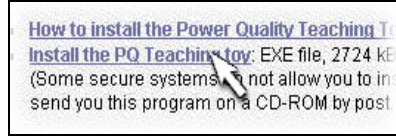
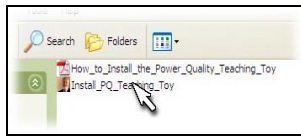


# How to Install the Power Quality Teaching Toy

1

Double-click on **Install\_PQ\_Teaching\_Toy** on your CD-ROM . Or run the “Install the PQ Teaching Toy” from the web at [www.PowerStandards.com/PQTeachingToy](http://www.PowerStandards.com/PQTeachingToy)

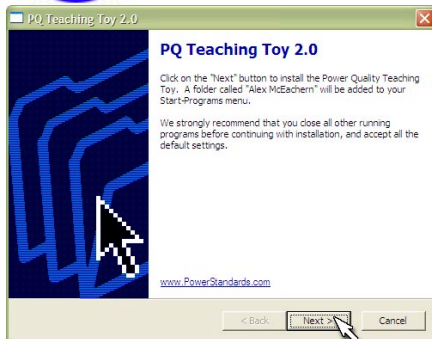


2



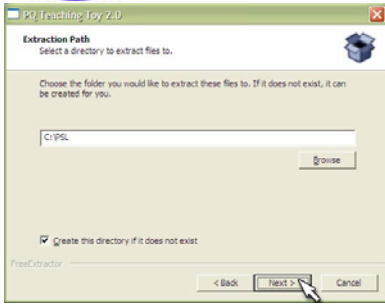
During installation, press “Enter” to answer every question.

3



Press Enter.

4



Press Enter.

5



Press Enter.



Press Enter.



Press Enter.

6



Success ! Press Enter.

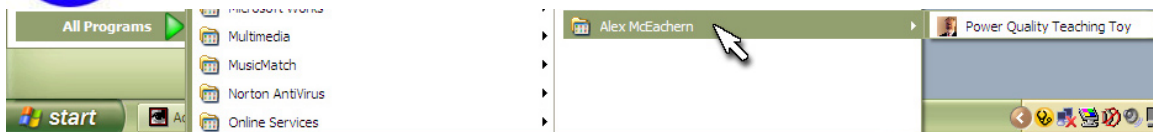
7

Run the program.

Start / Alex McEachern / Power Quality Teaching Toy



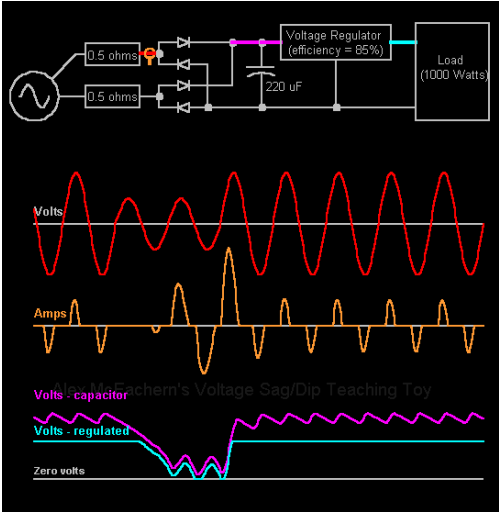
8



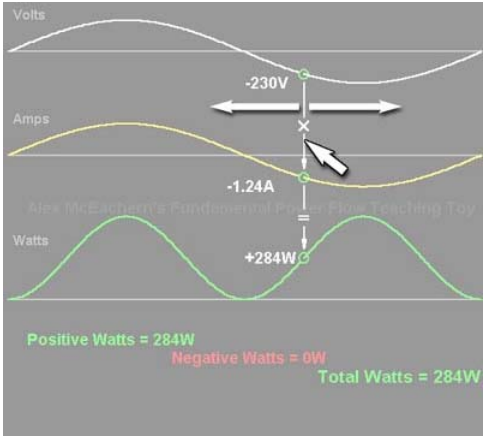
9



# Power Quality Teaching Toy Hints



Double-clicking on any graph will copy it to the clipboard. Paste into Microsoft® Word®, Microsoft® PowerPoint®, etc.



Grab the white cursor line, and slide it left and right.



Click on any question mark for advice...

Make as many copies as you like. This program is free.

## Have fun!