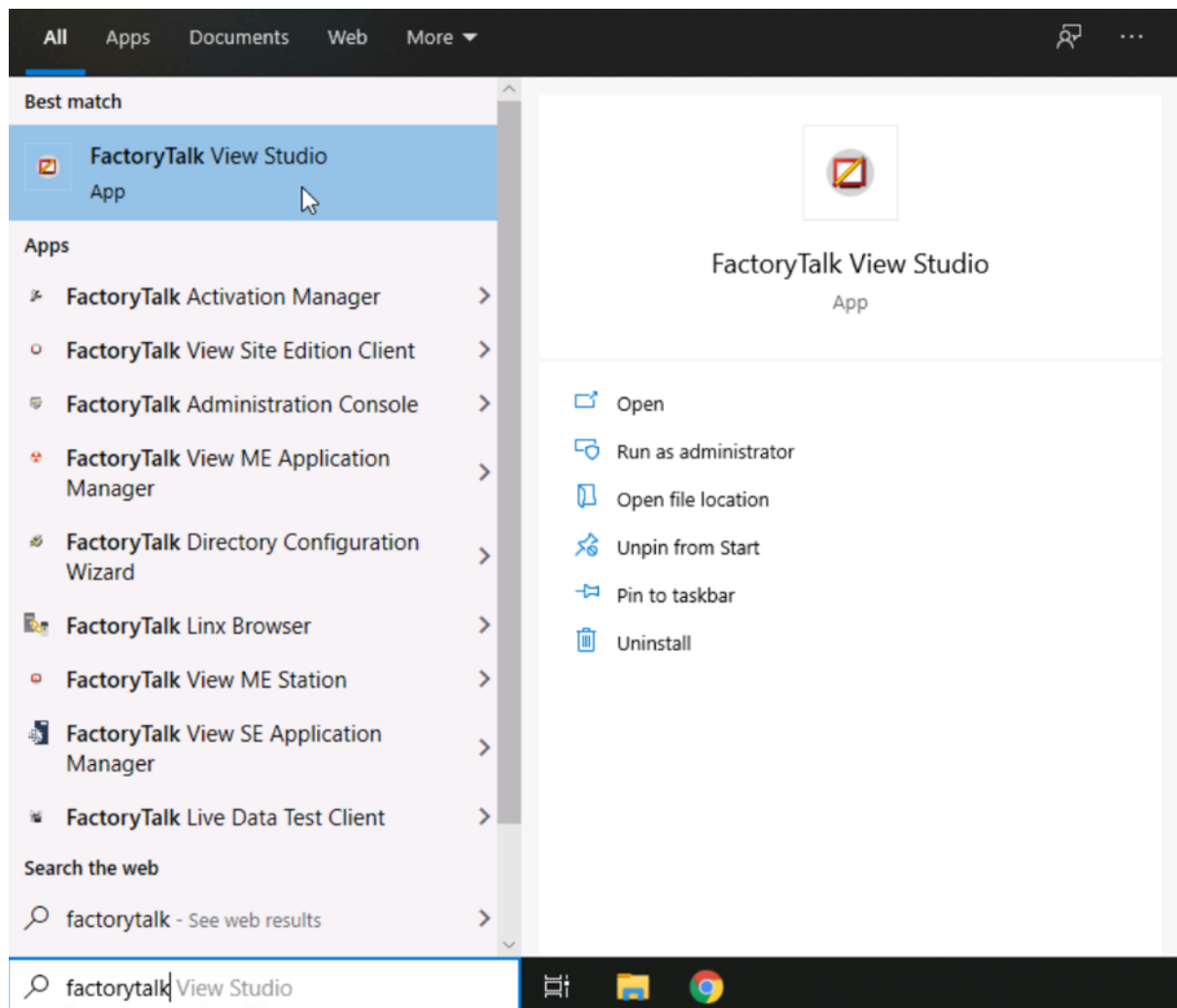
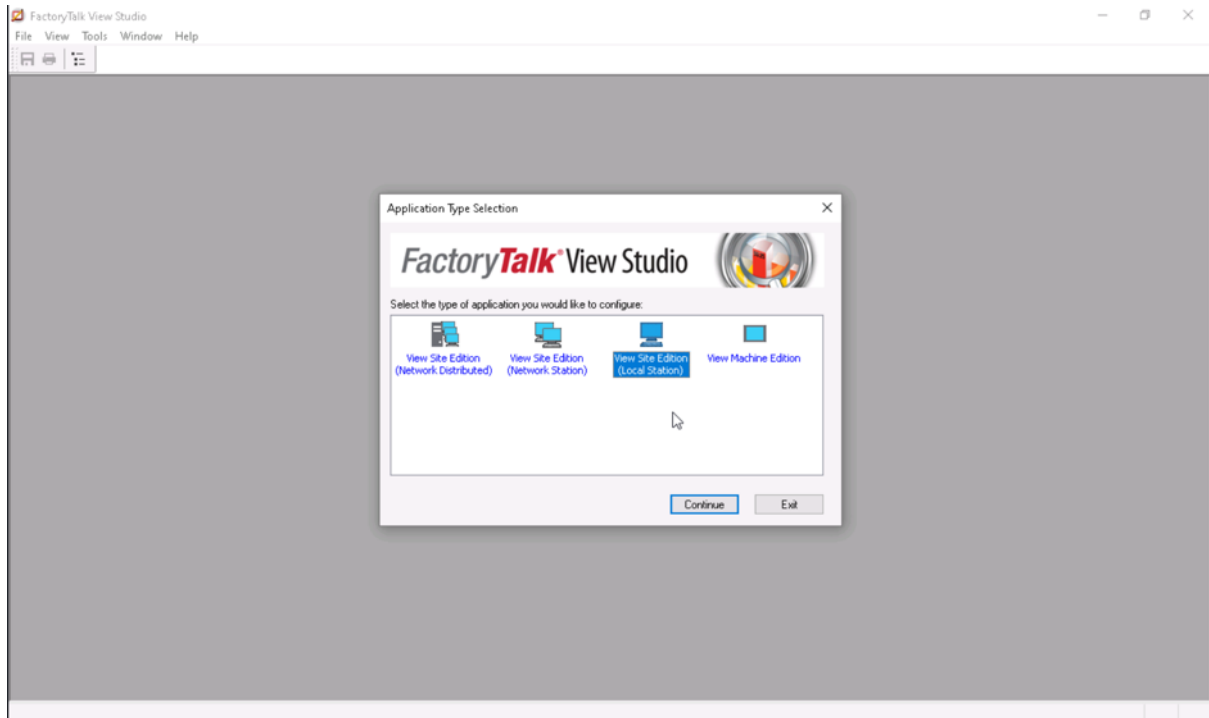


ME602 Practical guide

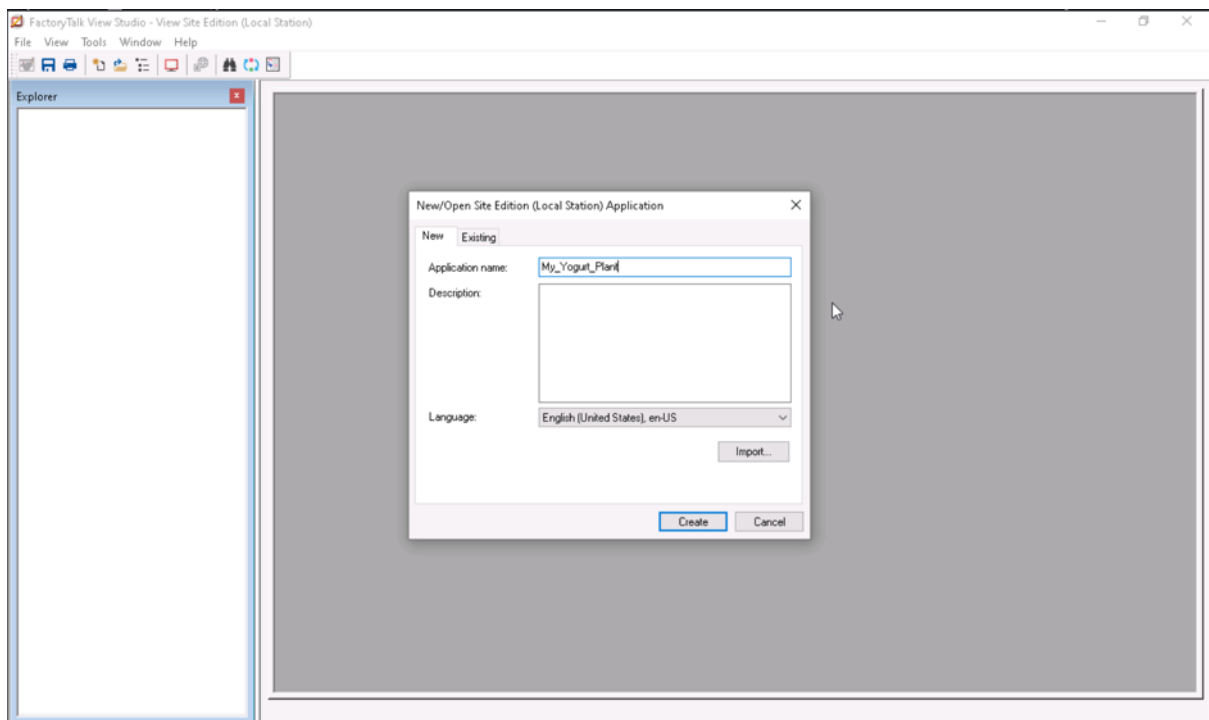
Step 1: Run FactoryTalk View Studio



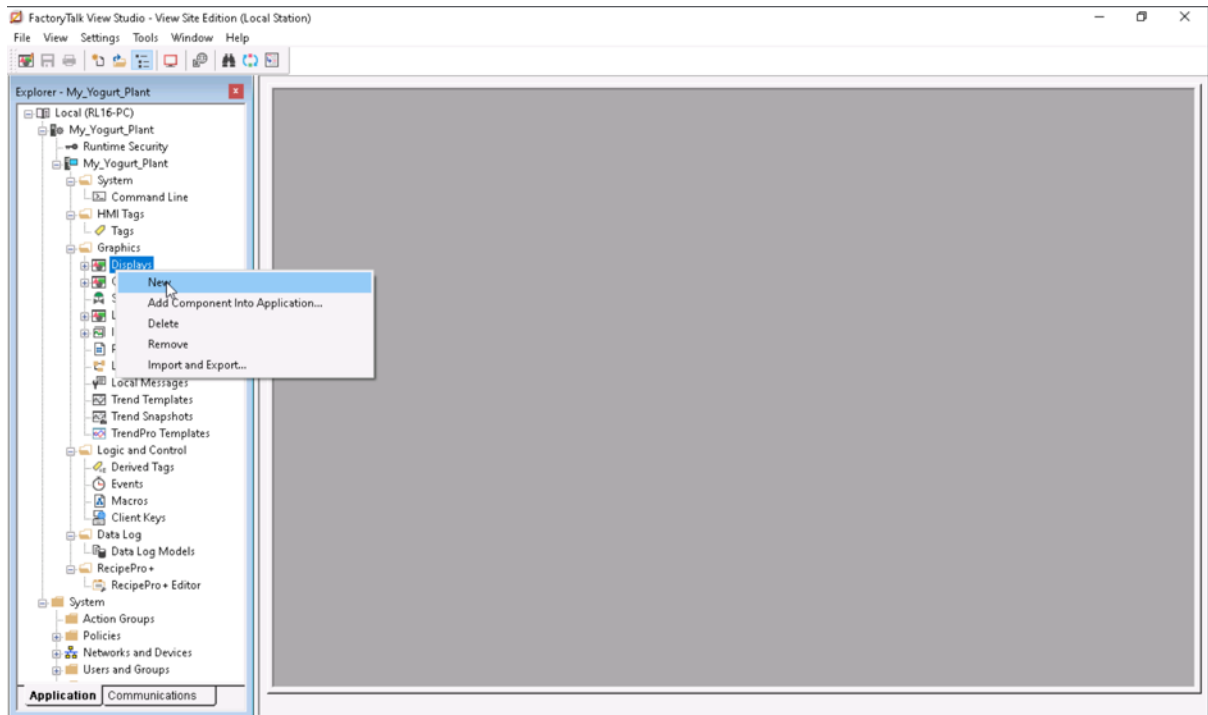
Step 2: Select Local Station as application type



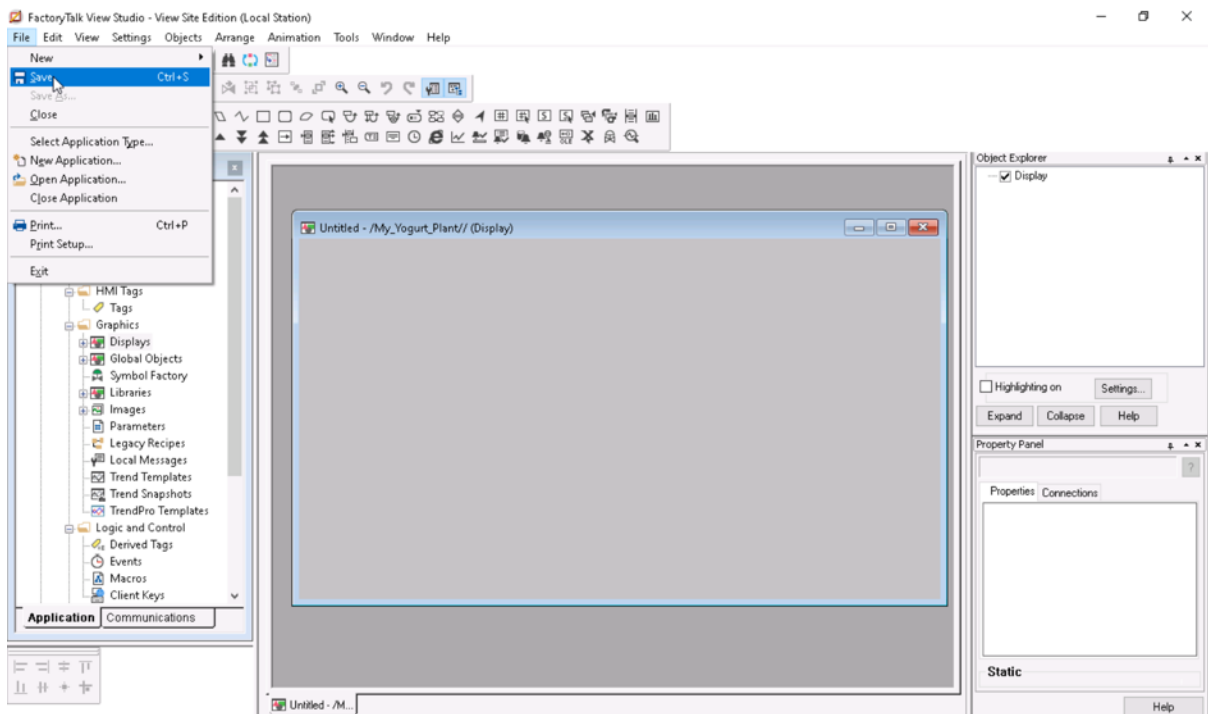
Step 3: Provide a name for the application



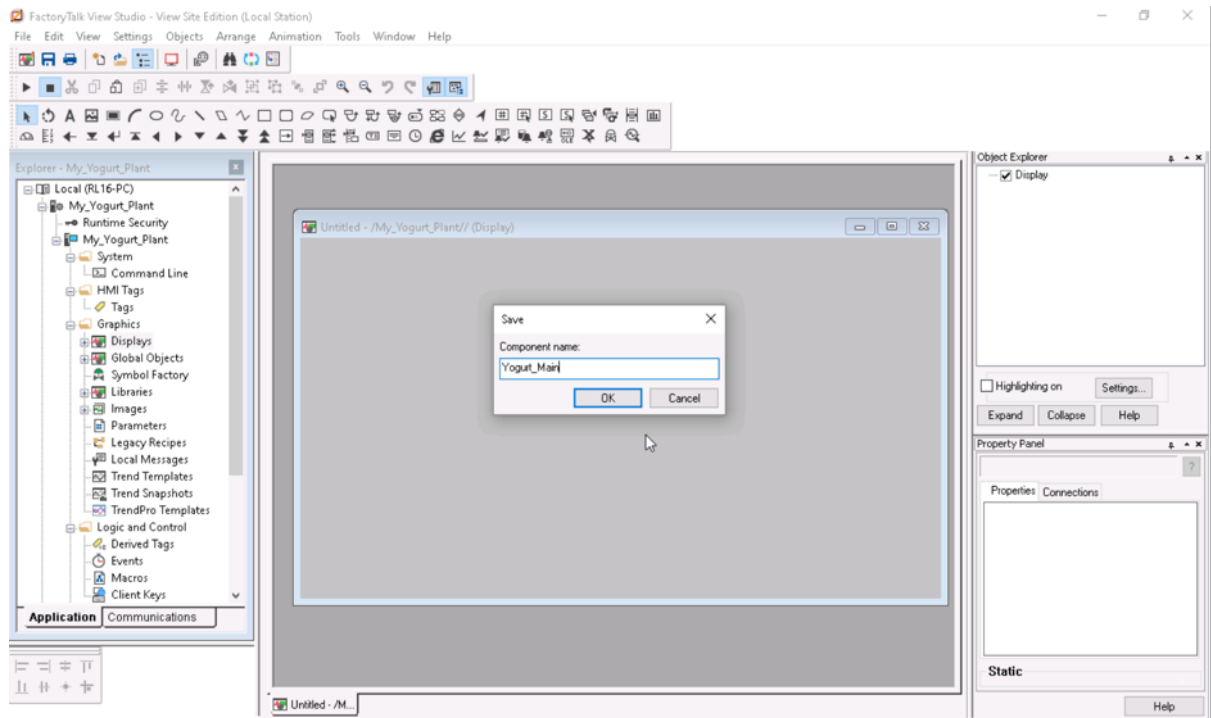
Step 4: Add a display



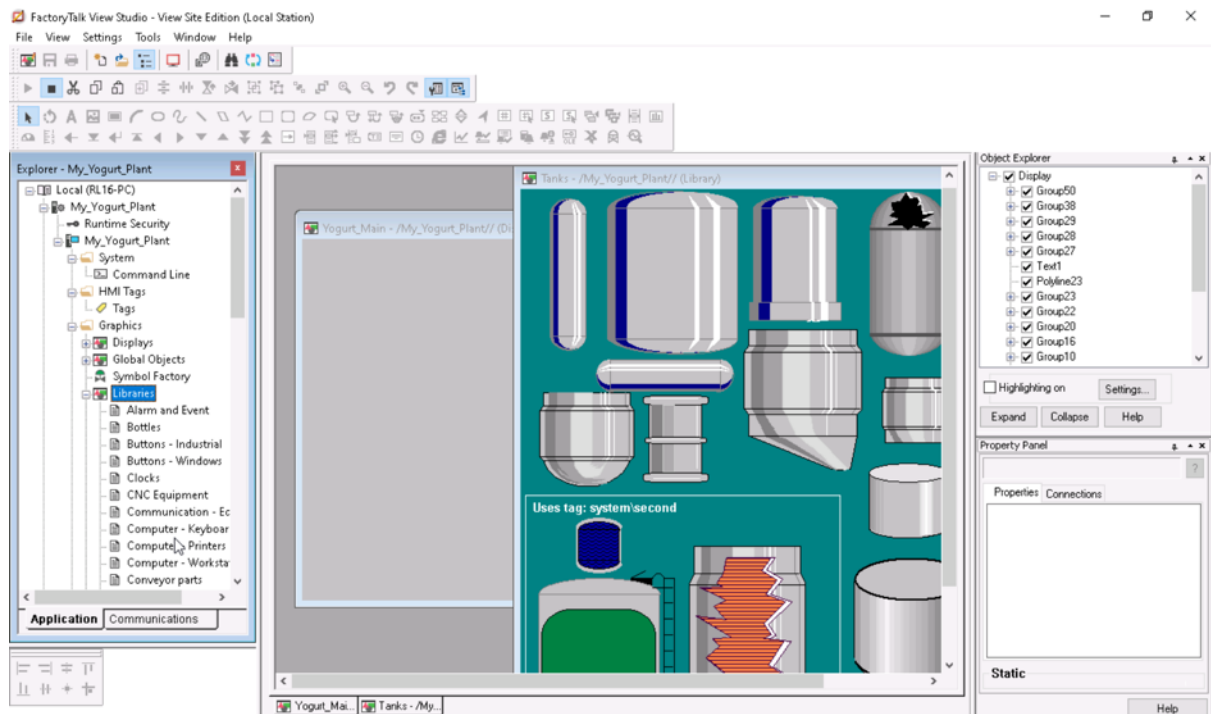
Step 5: Save the display created



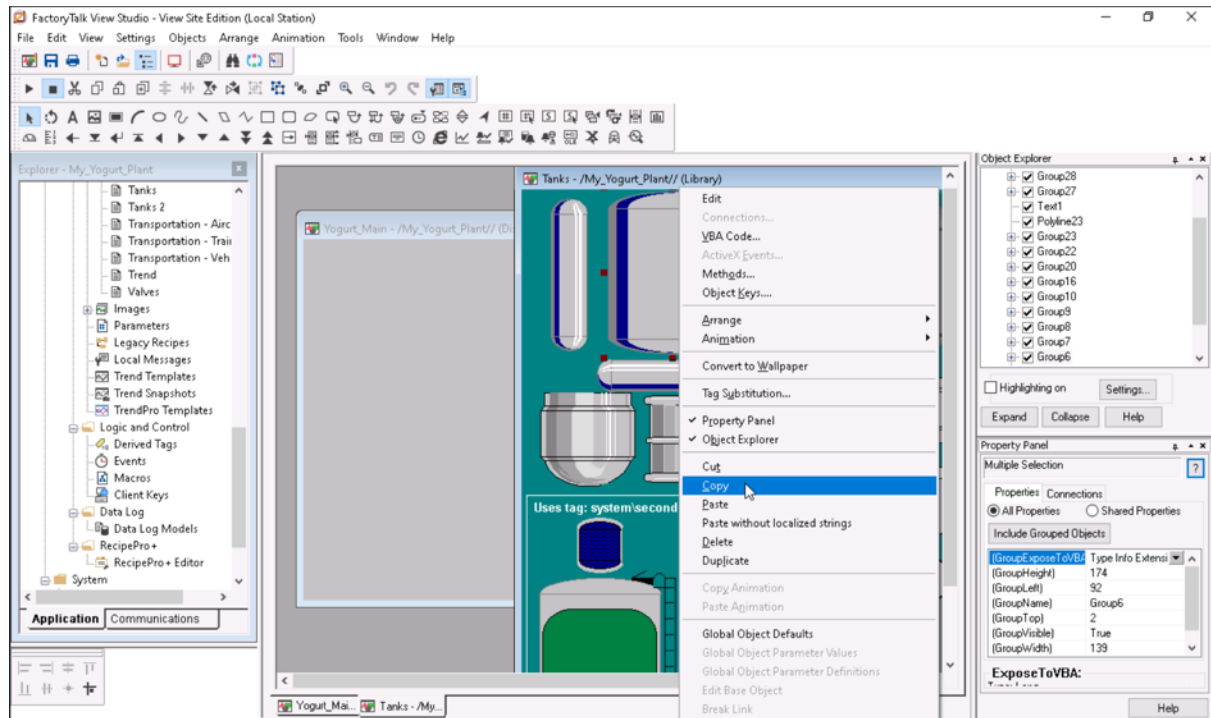
Step 6: The name you give will be referenced later in the application



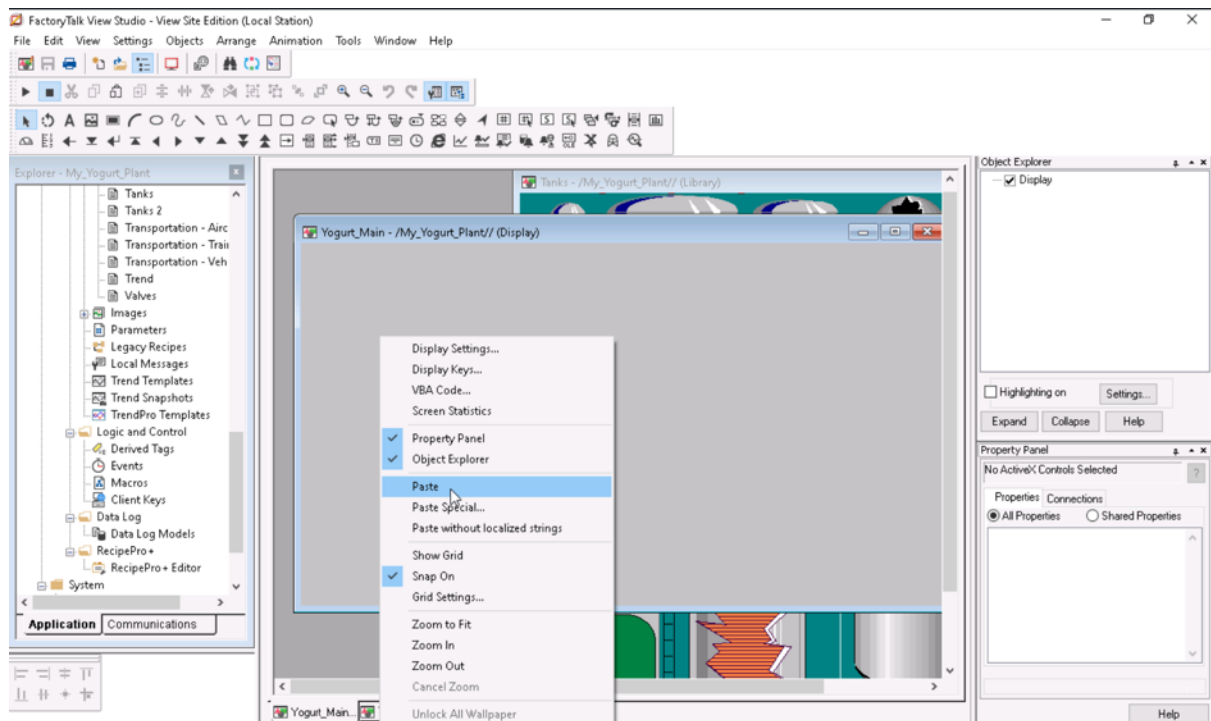
Step 7: You can navigate the existing library for symbols and objects



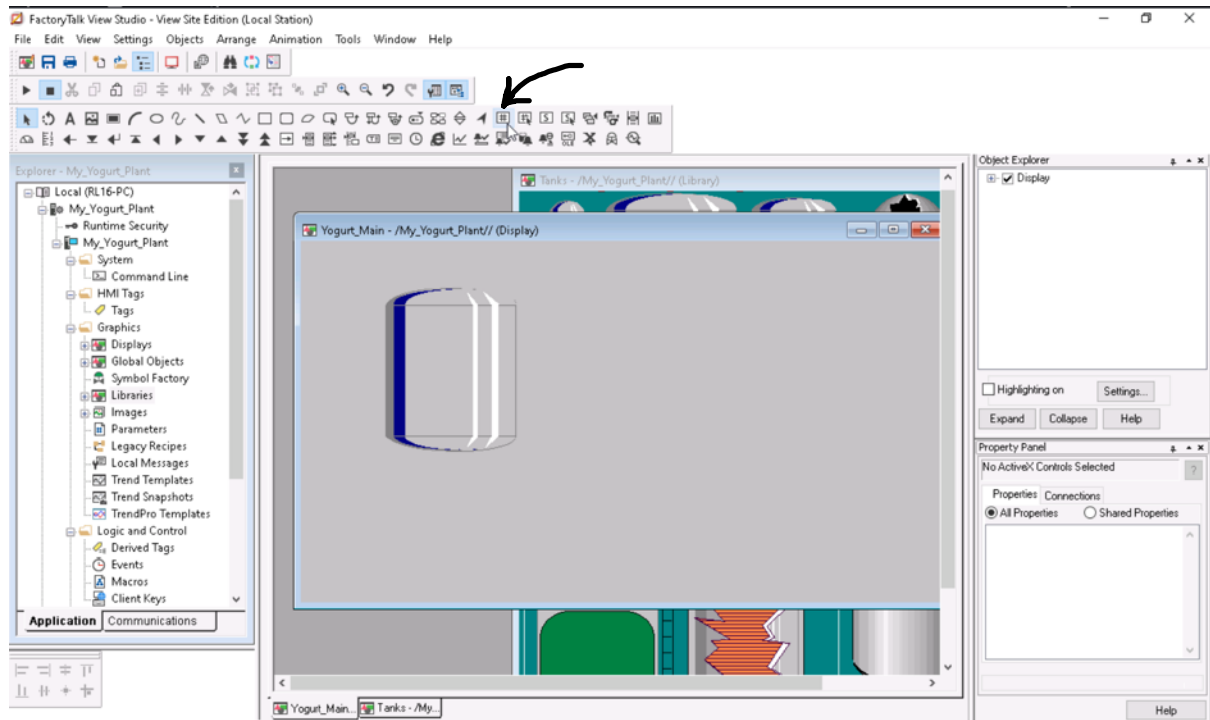
Step 8: By right-clicking on an object, you can copy it and then paste it in the display



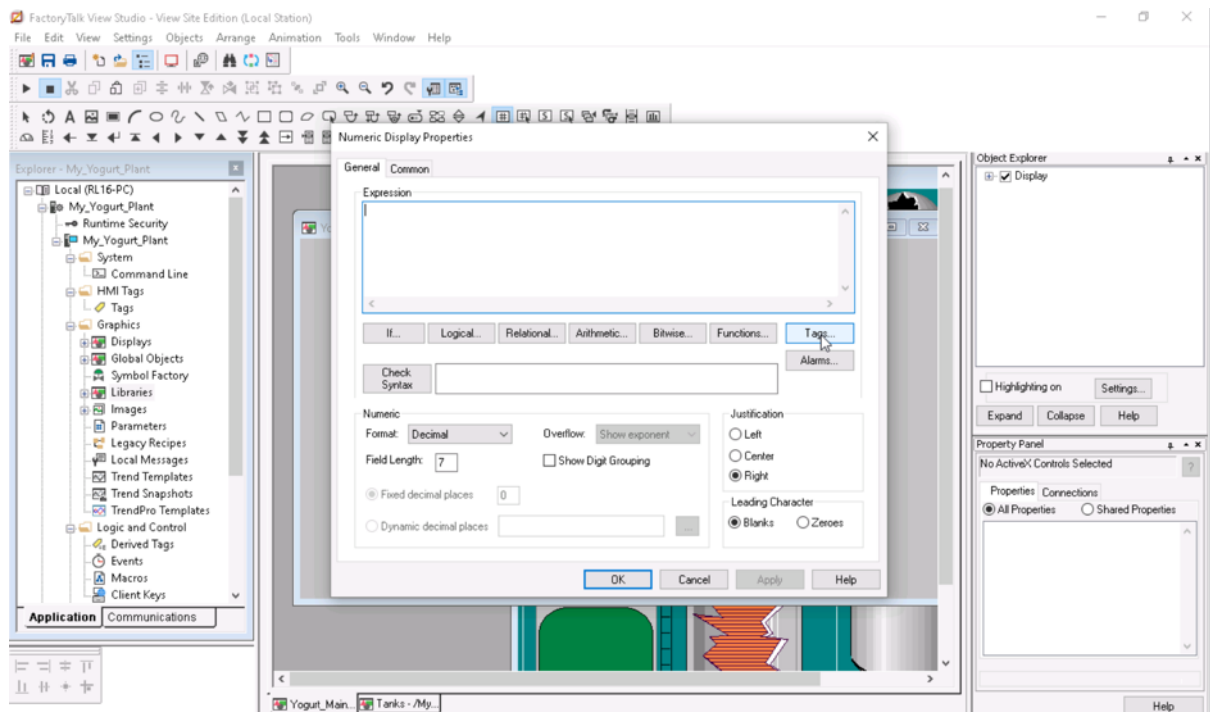
Step 9: Paste an object on the display



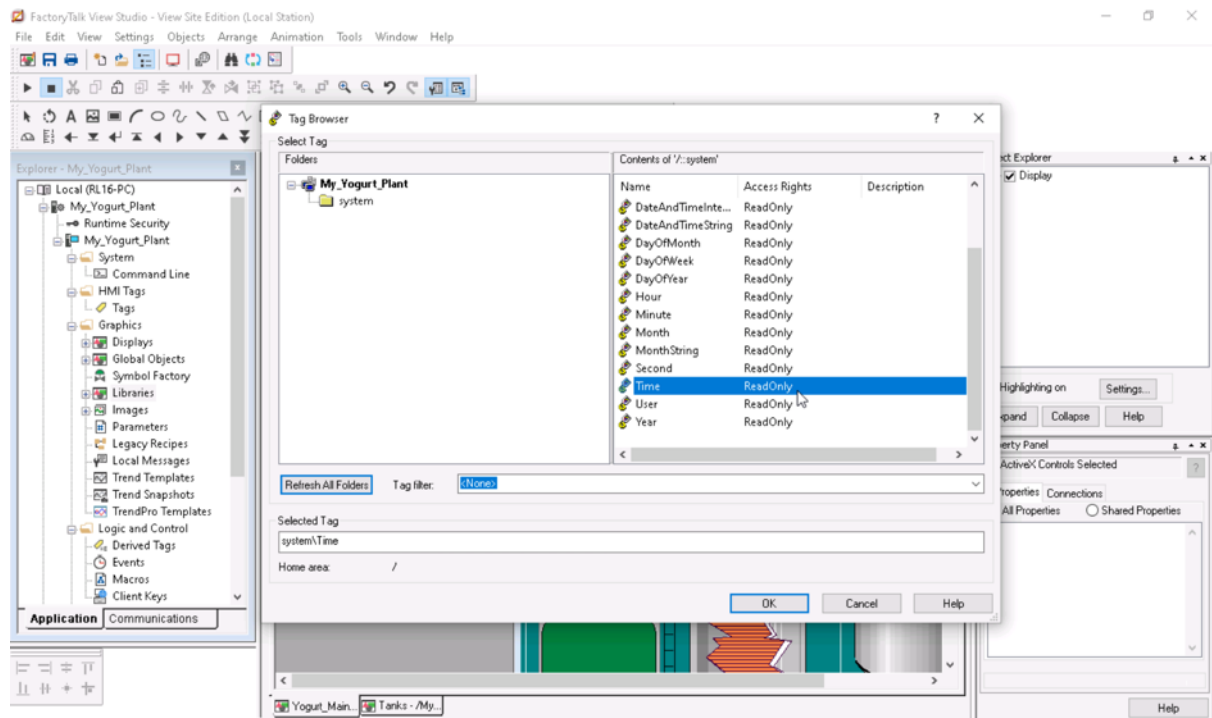
Step 10: You can add a Numeric Display to present information to the operator



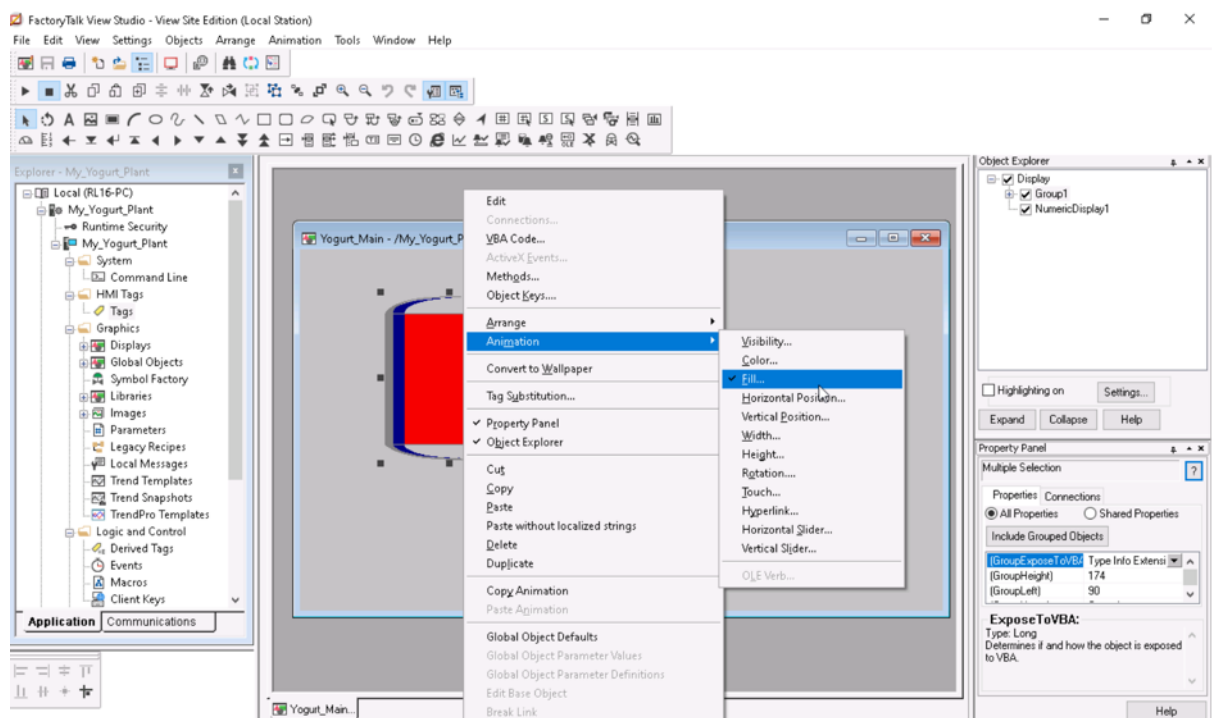
Step 11: A Numeric display could be linked to a tag



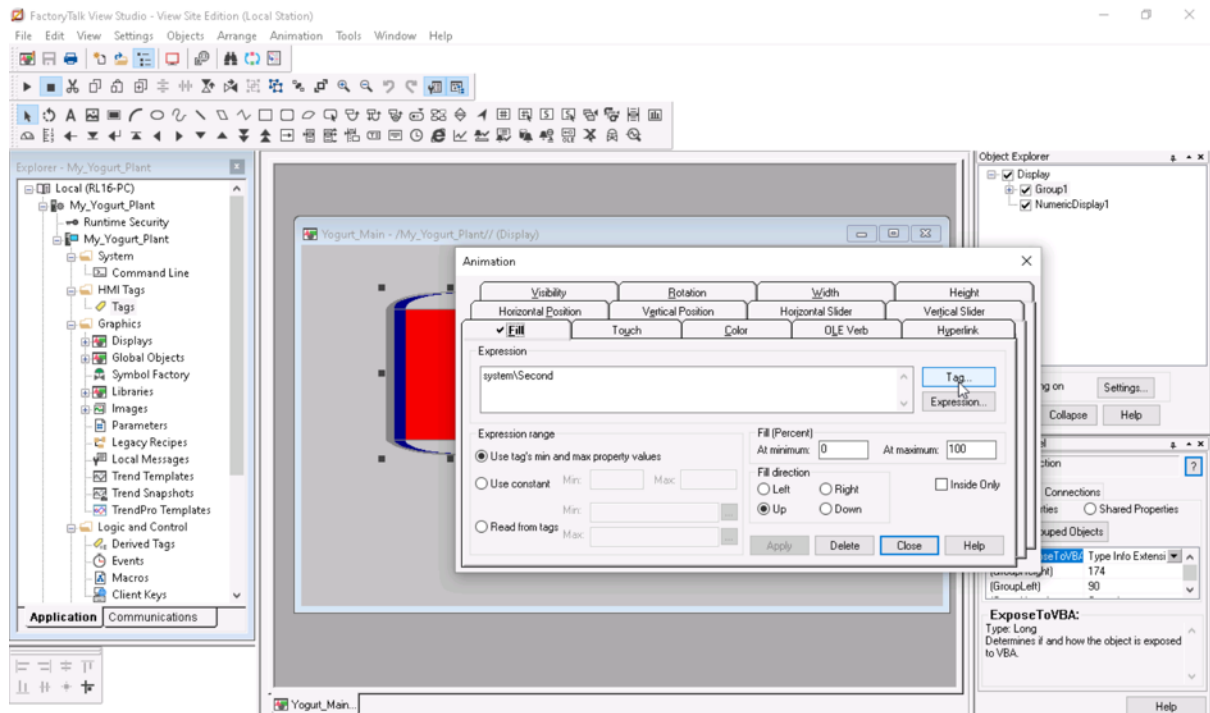
Step 12: You can navigate and search for available tags. For simplicity you can select the “Second” tag as a system variable that could be used to simulate changing variables.



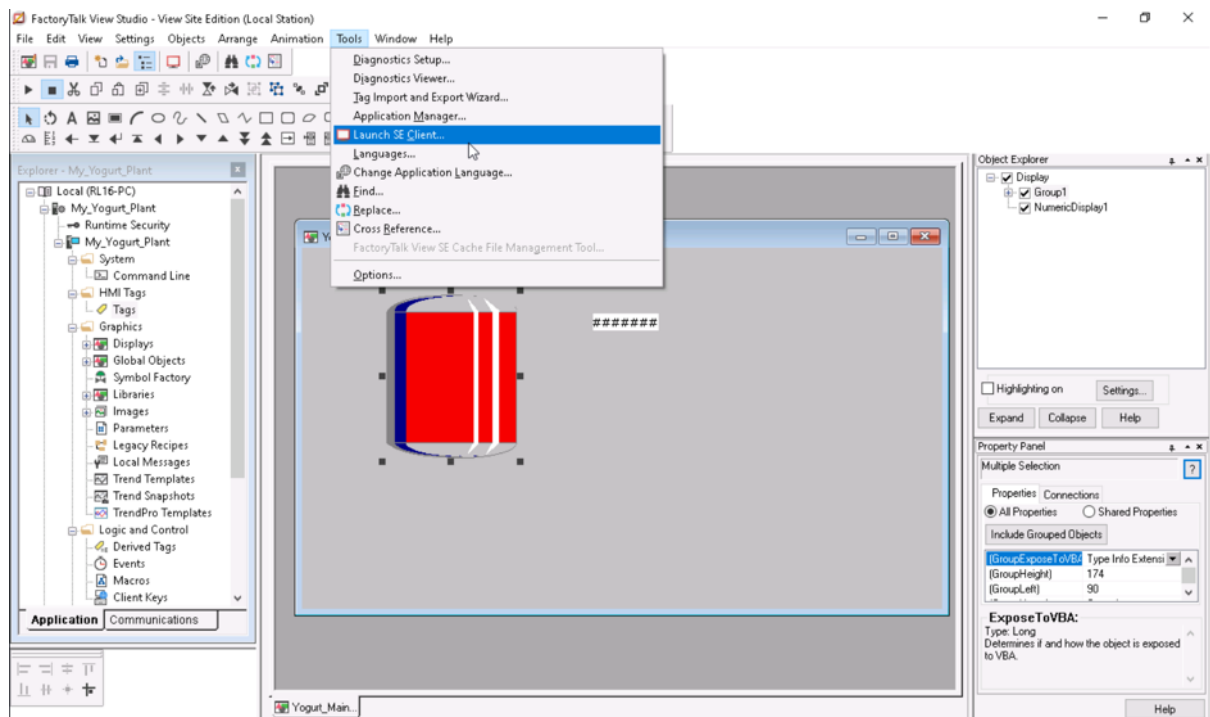
Step 13: By right-clicking on an object you can manipulate the “Animation” to introduce animations to the display.



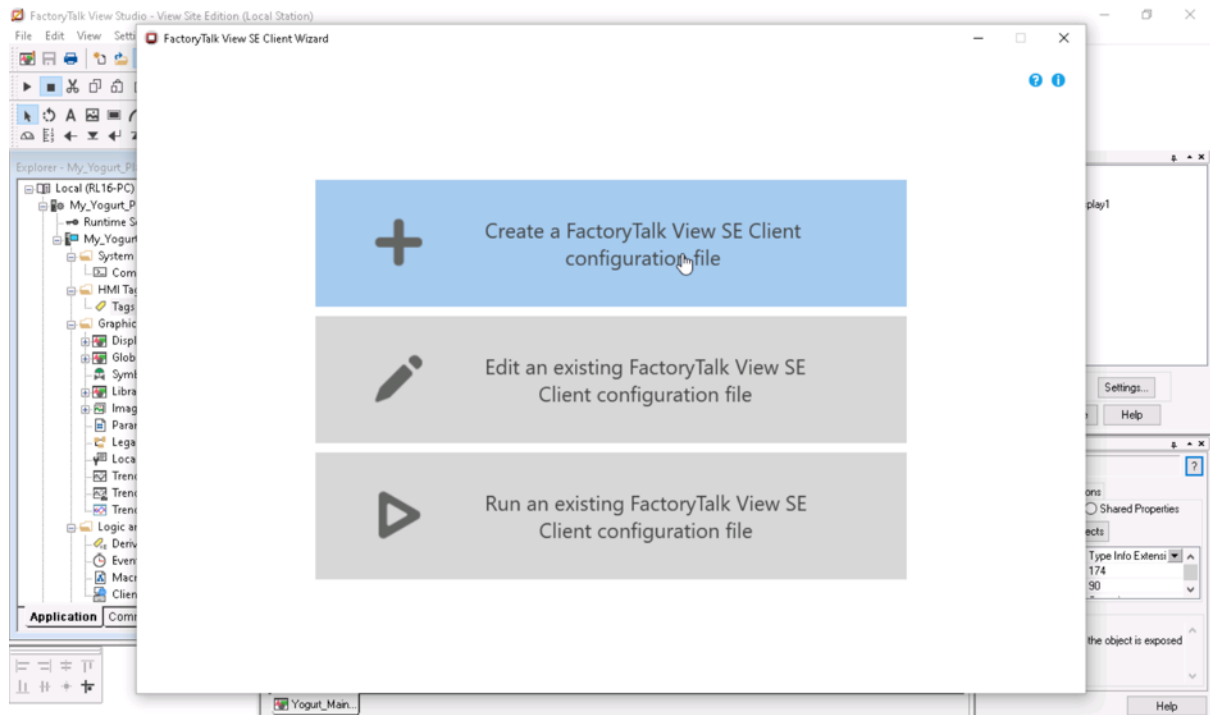
Step 14: Animations could be linked to tags



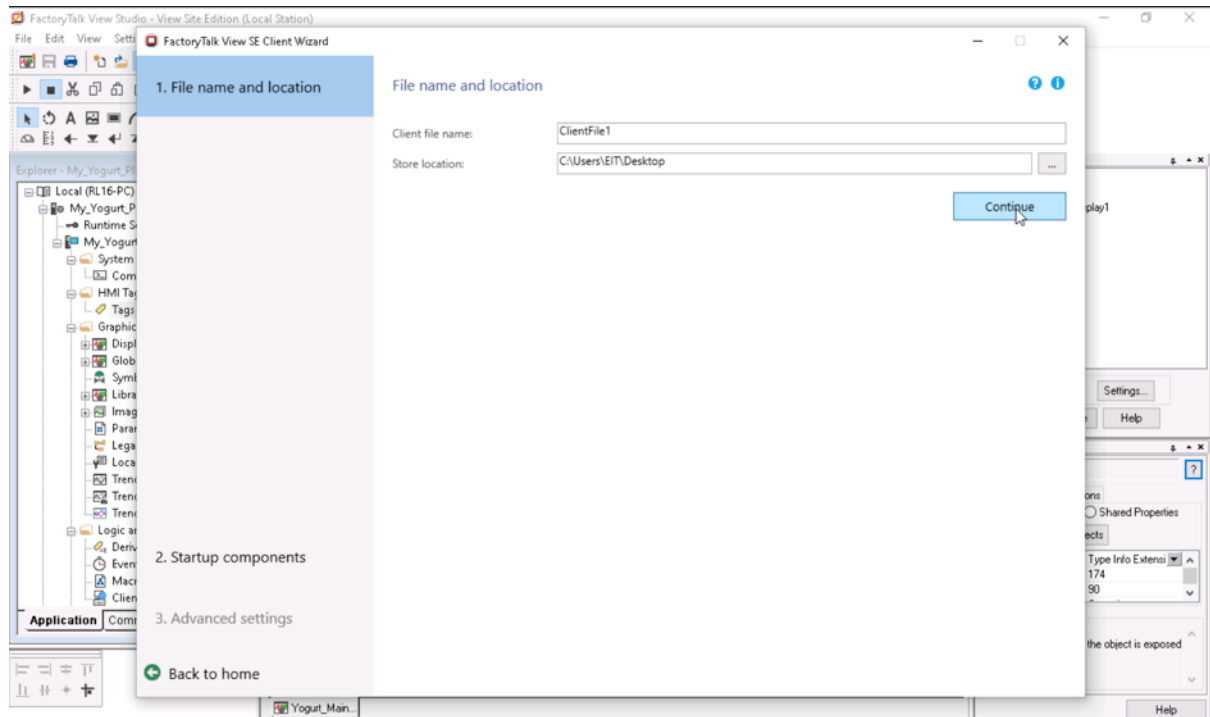
Step 15: Once the display is ready. You can save it and then go tools -> Launch SE Client to create a client application.



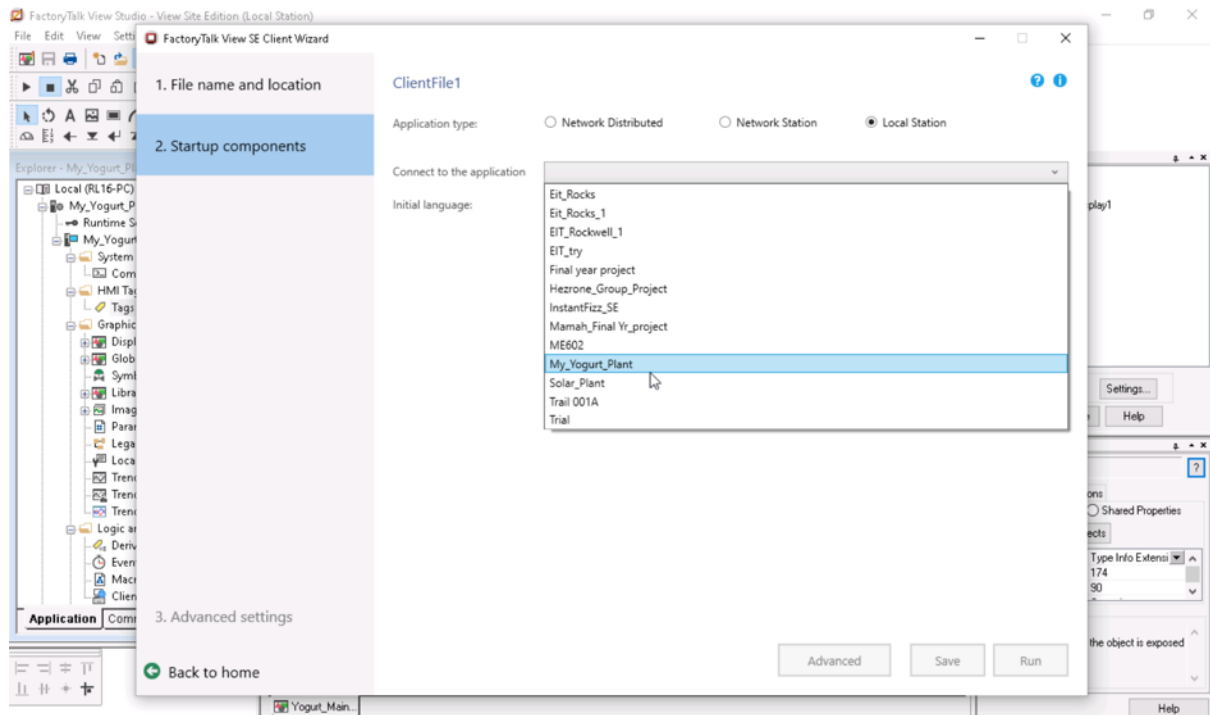
Step 16: Create the client



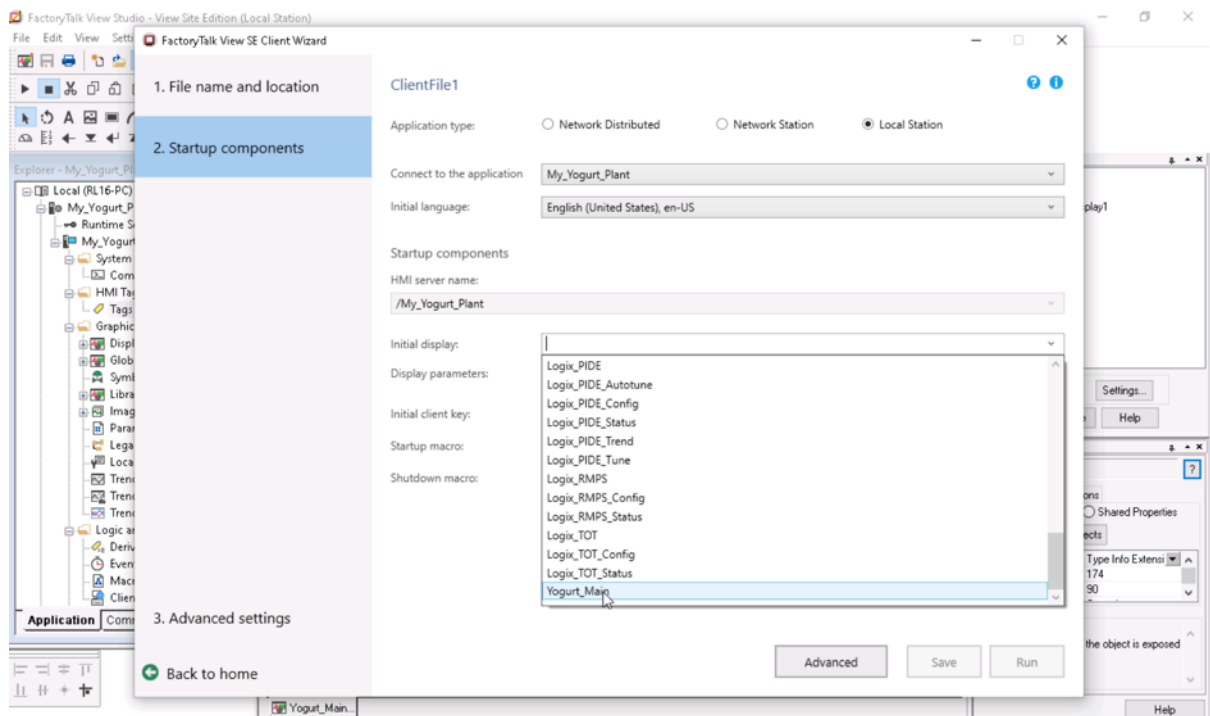
Step 17: Provide a name



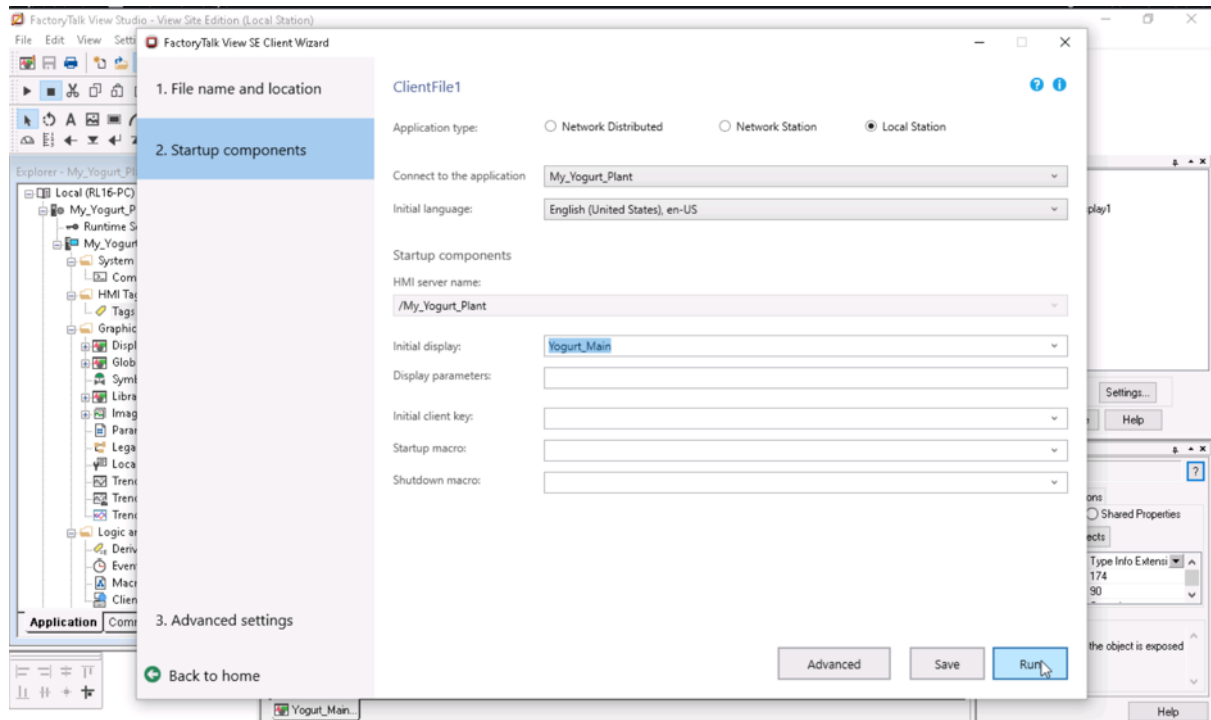
Step 18: Connect to the application created earlier.



Step 19: Provide an initial display from the application.



Step 20: The initial display in the figure below is the one created earlier.



Step 21: The application running

